



Meru Networks builds wireless schools for the future

The ability to deliver full bandwidth of 802.11n while handling a high density of users without disconnections or dropouts makes Meru a hero in educational ICT

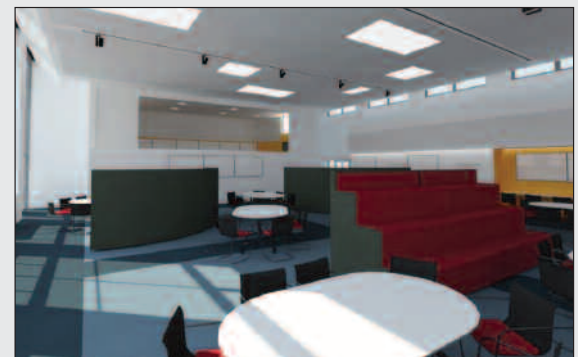
Meru Networks' "wireless without compromise" has vast potential for the future development of education delivery. With some of the largest school, college and higher education deployments globally, Meru's cutting-edge "virtual cell" wireless architecture has the proven ability to deliver the highest-speed IEEE 802.11n standard at full power to hundreds of students simultaneously, without any dropouts, failed connections or quality-of-service problems. With huge investment directed at education and ICT investment in particular, UK schools are finally starting to take notice of the transformational innovation Meru's wireless architecture can provide.

One Meru Networks end user, Maidstone's New Line Learning Federation, is using Meru to transform its two academies into wireless "hubs" of interactive learning. The Academies' plans centre on the concept of "elearning plazas": purpose-built multimedia rooms large enough to fit 100-150 students comfortably. The crux of the plan was flexibility. In the new learning environment,

students would need the freedom to work wherever they needed to work. Reliable wireless networking, therefore, was key.

"We considered two other solutions that used 'microcell' architectures, but these were ruled out because the vendors had never really had experience trying to support over 120 users all in one room," said Charles Ealham, New Line Learning Federation Network Manager. "It was like a new concept to them. It soon became clear that Meru was the right choice for our unique requirements."

Plaza Three at Cornwallis Academy has been fully operational with Meru wireless for three months, and everything is running smoothly, with "virtually no problems whatsoever," according to New Line Learning Federation Vice Principal Alan Enfield. The Meru network is running at full speed in both spectrums, while simultaneously supporting an extremely high density of users without the dropouts and disconnections that plague other wireless vendors. The Academies' transition to the new learning environment has already resulted in a



number of positive changes in students' behaviour.

"The kids are already becoming more independent and resourceful," said David Simons, Head of Cornwallis Academy. "They're better at self-regulating their own behaviour and working in teams. They've really started thinking about the bigger questions, too. I am extremely pleased with what this environment can enable."



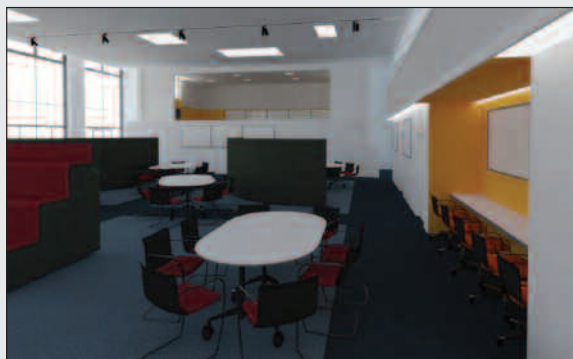
Even just a few years ago, the development of such an interactive and integrated learning environment simply would not have been possible. Early adopters of wireless in schools, colleges and higher education have learned the hard way that most wireless systems were not designed to deliver bandwidth-intensive multimedia applications in crowded classroom settings. Instead, most wireless systems were designed to deliver basic data applications to just a few users, usually no more than five per access point. Schools require wireless networks capable of rapid login and reliable connectivity; simple and cost-effective network installation; minimal supervision and network

management, but also addresses the critical elements for deploying enterprise-class wireless that most networks lack. With Meru, schools do not have to sacrifice functionality for price, scalability, or the ability to migrate to future standards. All of this is built into the Meru solution. Meru delivers the speed, capacity, management capabilities and affordability that educational institutions demand today and in future.

Meru Networks has been positioned by The Gartner Group as the most "Visionary"

wireless vendor for the last three years in a row. The distinction is no mere hype. By delivering the full bandwidth of 802.11n to hundreds of students simultaneously, without compromising on quality or dropping connections, the visionary wireless vendor is enabling the visions of a new generation.

- ▶ mhowell@merunetworks.com
- ▶ **07919 057244**
- ▶ www.merunetworks.com



management; and investment protection—because unlike corporate organisations, which may replace technology every 18-24 months, school capital budgets do not permit such short infrastructure refresh cycles.

Meru Networks is the missing piece of the wireless puzzle. The Meru wireless system not only delivers comprehensive security and centralized

